

Remote Scanner Management (RSM)

RSM SOLUTION OVERVIEW

Lower the total cost of ownership of your scanners

Symbol's Remote Scanner Management (RSM) technology enables remote management of all Symbol RSM-ready scanners on an enterprise's network. With a click of a button, asset-tracking information such as serial number, date of manufacture and firmware version can be easily discovered over a network. RSM technology provides an enterprise with the ability to automate the configuration process, thus eliminating manual staging. In addition, it enables monitoring of all scanners to optimize operational efficiency and firmware upgrading to support new features. Remote Scanner Management dramatically reduces the time, the cost and the logistical headaches IT departments face managing scanners in an enterprise.

Remote Scanner Management Solution

Symbol Technologies' Remote Scanner Management solution for Windows-based POS terminals is comprised of a suite of components that allow bar code data communication between an RSM-ready scanner and an OPOS-compliant POS application. Additionally, the suite of components enables remote scanner management using a plug-in to Microsoft's remote management agent (WMI). The scanner driver responsible for remote management is extensible, supporting the development of off-the-shelf third party management solutions.

Remote management functionality

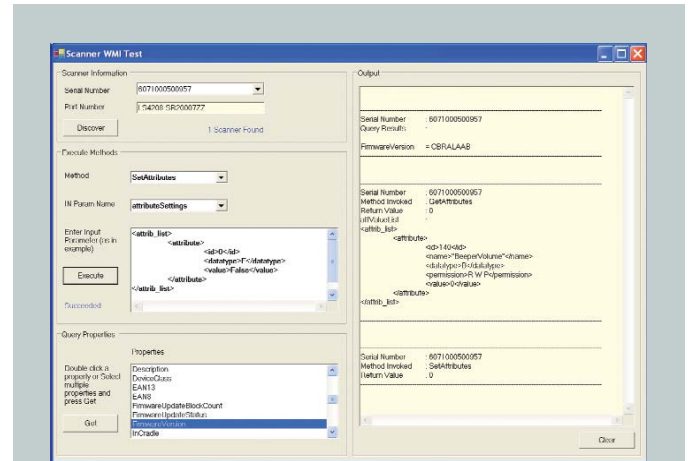
An RSM-ready scanner connected to an appropriately configured POS terminal enables the following functionality:

- Network Discovery – An RSM-ready scanner by means of the POS terminal will respond to a network query for asset tracking information.
- Device Configuration / Provisioning – Supports complete configuration by means of locally or network-initiated commands. A management application on the POS terminal receives the commands and routes them to the RSM-ready scanner.
- Firmware Upgrade – Firmware upgraded by means of a local or network-initiated command. The firmware upgrade file can reside locally on the POS terminal or on the network.

Basic RSM implementation

The basic RSM implementation, called the OPOS Driver Implementation with RSM Enabler, enables an RSM-ready scanner to transmit bar code data to a POS application today, as well as preload the remote management software onto the POS terminal. This allows you to seamlessly upgrade from just bar code data transmission to enterprise management of the scanner at any point in the future. A diagram illustrating the basic RSM implementation is included in this document.

For more information, contact us at +1.800.722.6234 or +1.631.738.2400, or visit us on the Web at: www.symbol.com/scanners



FEATURES

Query scanner for product information over a network

Device configuration over a network

Firmware upgrade over network

Automated out-of-the-box scanner communication with a POS terminal

Standards-based, open architecture

The basic RSM implementation enables the transmission of bar code data to a POS application today and preloads the software to seamlessly upgrade to enterprise management at any point in the future

BENEFITS

Instantaneous access to asset tracking information enables true asset management

Improves quality by significantly reducing operator error; reduces Total Cost of Ownership (TCO) and the need for custom products

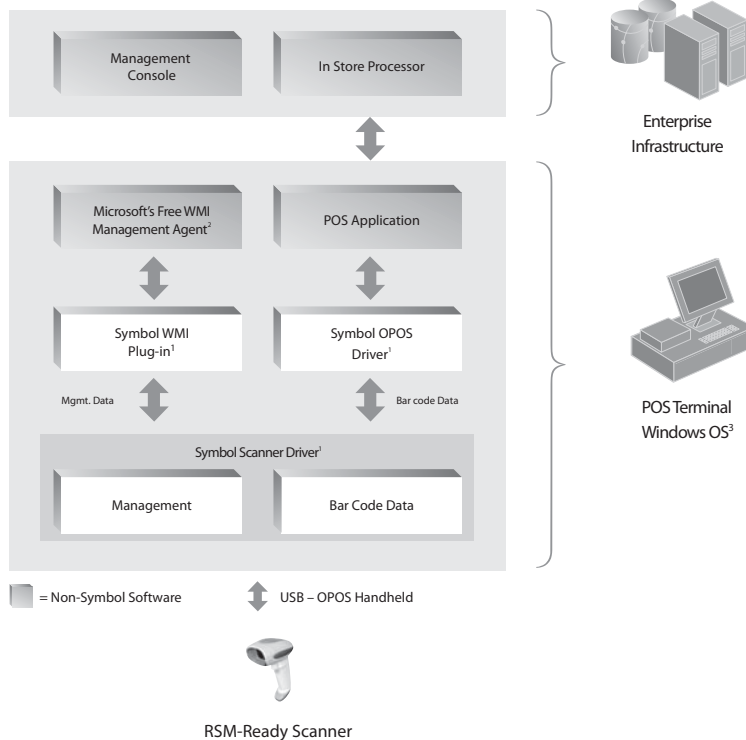
Future proofs your investment; reduces TCO; enables upgrade functionality without unplugging your scanner from the register

Enables a scanner connected to a POS terminal to be automatically detected; no more manual staging to enable a scanner to communicate with a host

Reduces application development time and costs; facilitates development of third-party solutions

Upgrade from bar code data transmission to enterprise management with the addition of a centralized management console

OPOS Driver Implementation with RSM Enabler



With RSM, enterprises can quickly and easily upgrade from bar code data transmission to enterprise management, enabling the discovery, asset tracking, provisioning and firmware upgrading of all handheld scanners from a remote centralized location.

Notes

1. Remote Scanner Management suite of components available from Symbol Technologies
2. Windows Management Instrumentation (WMI) is the Microsoft implementation of Web-Based Enterprise Management (WBEM), which is an industry initiative to develop a standard technology for accessing management information in an enterprise environment.
3. Windows XP SP2

About Symbol Technologies

Symbol Technologies, Inc., The Enterprise Mobility Company™, is a recognized worldwide leader in enterprise mobility, delivering products and solutions that capture, move and manage information in real time to and from the point of business activity. Symbol enterprise mobility solutions integrate advanced data capture products, radio frequency identification technology, mobile computing platforms, wireless infrastructure, mobility software and world-class services programs. Symbol enterprise mobility products and solutions are proven to increase workforce productivity, reduce operating costs, drive operational efficiencies and realize competitive advantages for the world's leading companies. More information is available at www.symbol.com

symbol
The Enterprise Mobility Company™

Corporate Headquarters
Symbol Technologies, Inc.
 One Symbol Plaza
 Holtsville, NY 11742-1300
 TEL: +1.800.722-6234
 +1.631.738.2400
 FAX: +1.631.738.5990

For Asia Pacific Area
Symbol Technologies Asia, Inc.
 (Singapore Branch)
 Asia Pacific Division
 230 Victoria Street #12-06/10
 Bugis Junction Office Tower
 Singapore 188024
 TEL: +65.6796.9600
 FAX: +65.6796.7199

For Europe, Middle East and Africa
Symbol Technologies
 EMEA Division
 Symbol Place, Winnersh Triangle
 Berkshire, England RG41 5TP
 TEL: +44.118.9457000
 FAX: +44.118.9457500

For North America, Latin America and Canada
Symbol Technologies
 The Americas
 One Symbol Plaza
 Holtsville, NY 11742-1300
 TEL: +1.800.722.6234
 +1.631.738.2400
 FAX: +1.631.738.5990

Symbol Web Site
 For a complete list of Symbol subsidiaries and business partners worldwide contact us at:
www.symbol.com
E-mail
info@symbol.com



Part No. DS-RSM Printed in USA 08/06 © Copyright 2006 Symbol Technologies, Inc. All rights reserved. Symbol is an ISO 9001 and ISO 9002 UKAS, RVC, and RAB Registered company, as scope definitions apply. Specifications are subject to change without notice. Symbol® is a registered trademark of Symbol Technologies, Inc. All other trademarks and service marks are proprietary to their respective owners. For system, product or services availability and specific information within your country, please contact your local Symbol Technologies office or Business Partner.